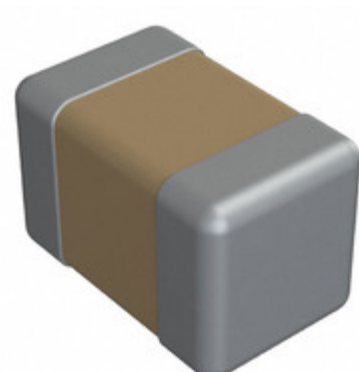


0805Y2000101MXR



Part Number: [0805Y2000101MXR](#)
Manufacturer: [Knowles Syfer](#)
Description: CAP CER 100PF 200V X7R 0805
Data sheet: [MLCC Capacitor Datasheet](#)
[MLCC Catalog](#)

RoHS Status: Lead free / RoHS Compliant
Ship From: Hong Kong
Shipment Way: DHL/Fedex/TNT/UPS/EMS

Images are for reference only.
 See Product Specifications for product details.
 Buy **0805Y2000101MXR** with confidence from
 Component-World.HK, 1 Year Warranty

[Request For Quotation](#)

PRODUCT PARAMETER

Part Number	0805Y2000101MXR	Manufacturer	Knowles Syfer
Description	CAP CER 100PF 200V X7R 0805	Lead Free Status / RoHS Status	Lead free / RoHS Compliant
Quantity Available	369289 pcs	Data sheet	MLCC Capacitor Datasheet MLCC Catalog
Category	Capacitors	Voltage - Rated	200V
Tolerance	±20%	Thickness (Max)	0.051" (1.30mm)
Temperature Coefficient	X7R (2R1)	Size / Dimension	0.079" L x 0.049" W (2.00mm x 1.25mm)
Series	FlexiCap™	Ratings	-
Packaging	Tape & Reel (TR)	Package / Case	0805 (2012 Metric)
Operating Temperature	-55°C ~ 125°C	Mounting Type	Surface Mount, MLCC
Moisture Sensitivity Level (MSL)	1 (Unlimited)	Manufacturer Standard Lead Time	8 Weeks
Lead Spacing	-	Lead Free Status / RoHS Status	Lead free / RoHS Compliant
Height - Seated (Max)	-	Features	Soft Termination
Failure Rate	-	Detailed Description	100pF ±20% 200V Ceramic Capacitor X7R (2R1) 0805 (2012 Metric)
Capacitance	100pF	Applications	Boardflex Sensitive

Component-World.com is a Reliable Stocking Distributor of Electronic Components. We specialize in all Knowles Syfer series electronic components. We have 369289 pieces of Knowles Syfer 0805Y2000101MXR in stock available now. Request a quote from electronics components distributor at Component-World.com, our sales team will contact you within 24 hours.
 RFQ Email: info@Components-World.com

RELATED PRODUCTS

	Part#: 0805Y2000101KQT Description: CAP CER 100PF 200V C0G/NP0 0805	Manufacturers: Knowles Syfer	RFQ
	Part#: 0805Y2000101MET Description: CAP CER 100PF 200V X7R 0805	Manufacturers: Knowles Syfer	RFQ
	Part#: 0805Y2000101KXR Description: CAP CER 100PF 200V X7R 0805	Manufacturers: Knowles Syfer	RFQ
	Part#: 0805Y2000101KUT Description: CAP CER 100PF 200V C0G/NP0 0805	Manufacturers: Knowles Syfer	RFQ
	Part#: 0805Y2000102JER Description: CAP CER 1000PF 200V X7R 0805	Manufacturers: Knowles Syfer	RFQ
	Part#: 0805Y2000102KDT Description: CAP CER 1000PF 200V X7R 0805	Manufacturers: Knowles Syfer	RFQ
	Part#: 0805Y2000102JXT Description: CAP CER 1000PF 200V X7R 0805	Manufacturers: Knowles Syfer	RFQ
	Part#: 0805Y2000102JDR Description: CAP CER 1000PF 200V X7R 0805	Manufacturers: Knowles Syfer	RFQ
	Part#: 0805Y2000101MER Description: CAP CER 100PF 200V X7R 0805	Manufacturers: Knowles Syfer	RFQ
	Part#: 0805Y2000101KFT Description: CAP CER 100PF 200V C0G/NP0 0805	Manufacturers: Knowles Syfer	RFQ
	Part#: 0805Y2000102JXR Description: CAP CER 1000PF 200V X7R 0805	Manufacturers: Knowles Syfer	RFQ
	Part#: 0805Y2000102KER Description: CAP CER 1000PF 200V X7R 0805	Manufacturers: Knowles Syfer	RFQ
	Part#: 0805Y2000102JET Description: CAP CER 1000PF 200V X7R 0805	Manufacturers: Knowles Syfer	RFQ
	Part#: 0805Y2000102JDT Description: CAP CER 1000PF 200V X7R 0805	Manufacturers: Knowles Syfer	RFQ
	Part#: 0805Y2000101KFR Description: CAP CER 100PF 200V C0G/NP0 0805	Manufacturers: Knowles Syfer	RFQ
	Part#: 0805Y2000102KDR Description: CAP CER 1000PF 200V X7R 0805	Manufacturers: Knowles Syfer	RFQ
	Part#: 0805Y2000101MDR Description: CAP CER 100PF 200V X7R 0805	Manufacturers: Knowles Syfer	RFQ
	Part#: 0805Y2000101MDT Description: CAP CER 100PF 200V X7R 0805	Manufacturers: Knowles Syfer	RFQ
	Part#: 0805Y2000101KXT Description: CAP CER 100PF 200V X7R 0805	Manufacturers: Knowles Syfer	RFQ
	Part#: 0805Y2000101MXT Description: CAP CER 0805	Manufacturers: Knowles Syfer	RFQ

Related keywords for 0805Y2000101MXR

Knowles Syfer 0805Y2000101MXR	0805Y2000101MXR distributor	0805Y2000101MXR supplier	0805Y2000101MXR price
0805Y2000101MXR download datasheet	0805Y2000101MXR datasheet	0805Y2000101MXR stock	buy 0805Y2000101MXR
Knowles Syfer 0805Y2000101MXR	Syfer 0805Y2000101MXR		